

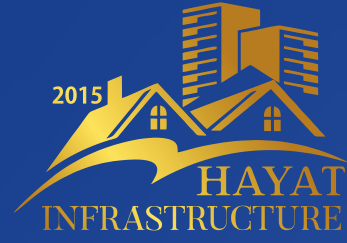


# LUXURY AT YOUR LEISURE



HAYAT ASSETS





# 3 BHK Luxurious Apartment

Close to Goa  
International Airport



HAYAT ASSETS



HAYAT ASSETS

Assets By Hayat Introducing to you the all new Master piece project by Hayat Infrastructure

**peaceful living with quality lifestyle.**

Hayat infrastructure promises you a lifestyle that is Extravagant and marvellous in the heart of the city the most luxurious & unique design of Hayat Assets a modern equipped with all the facilities such as smart automation system.

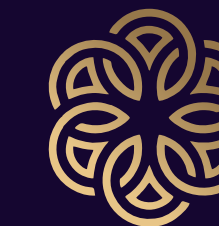


## Living Room

Disconnect from the distractions of the modern world and take a time to relax at the seaside apartment and feel a sense of calm in your own living room with class, comfort and convenience. Imagine being in this living room and looking at the sea view designed with the great discoveries of space in mind.

## Elegant Master Bedroom

Elegant master bedroom designed for you to bring your level of inspiration up with this incredible and adorable design of the bedroom. This bedroom is proof there's nothing boring about natural toned interiors a classy bedroom with a touch of glamour. Dream bedroom with peaceful view.



HAYAT ASSETS

Bedroom



Kids Room

## Clubhouse

It's a great view from here facing towards Arabian sea and clubhouse with mechanical gymnasium Magnificent Property with independent mansions draped in nature which match and enhance your lifestyle



Assets has underground parking system with security professional trained for car parking directions and 24/7 guard duty. We have been instrumental in offering premium quality car parking using High grade material and modern techniques, landscaping, walkways and open space in commercial parking lot design, Assets have designed a spectrum highlighting entrance having spacious parking & keeping in mind of your security as our responsibility.

## Kitchen

A kitchen can be so much more than just cabinets and doors. Discover the modular kitchen built with top appliances such as smoke-free kitchen & chimneys.



## The Bathroom

The bathroom are specially designed with Kohler sanitary fittings that offers to indulge your senses and elevate your bathroom style. By keeping all the High standard sanitary fittings and fully milestone bathroom with the dynamic finish and a fall ceiling shower with auto geezer system

## Internal Amenities

- Smart Switches
- Latest LED Lights
- Automated Door Locks of HAFELE (Branded)
- 7 Fans of HAVELLS Brand
- Balcony Glass Tuffan
- A/c Ducting Provision
- Gas Line Provision
- Solar Ststem Wiring Provision
- Goansal Wood Main Door
- Morrocan Tiles
- Direct Garbage System
- Kitchen Platform
- Rose Gold Kohler Premium Fitting Santary
- Washing Machine Water Outlet Provision



## Swimming Pool

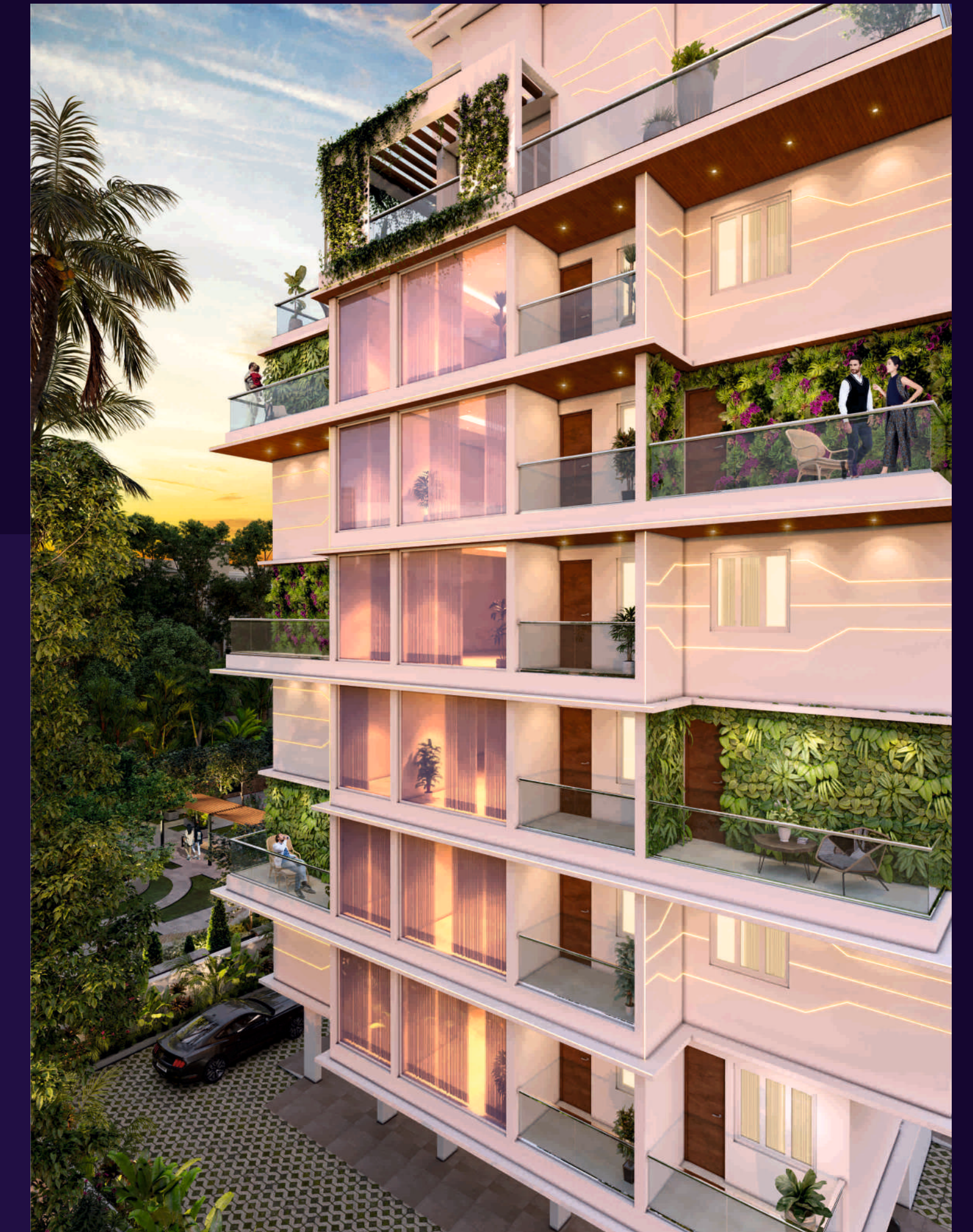
The top floor of the Hayat Assets where all the joy & majestic joins in. The place having swimming pool & clubhouse which gives you a top notch view of the arabian sea, where you will find yourself in it and enjoy the place where peace begins! Our latest aesthetic pool, build for clients in assets. a modern multi level design .The sort the seamlessly integrates with your home. Just dive in and enjoy the atmosphere we designed for you.

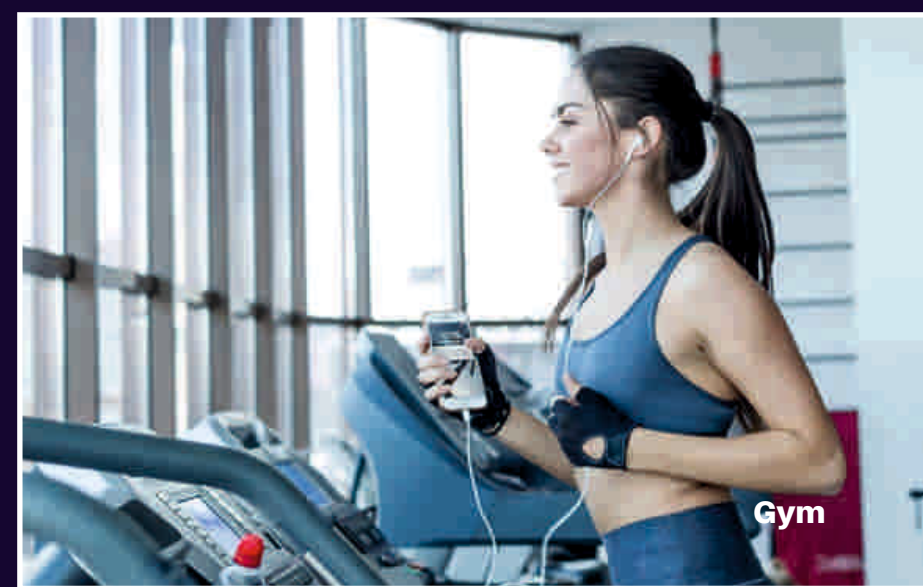
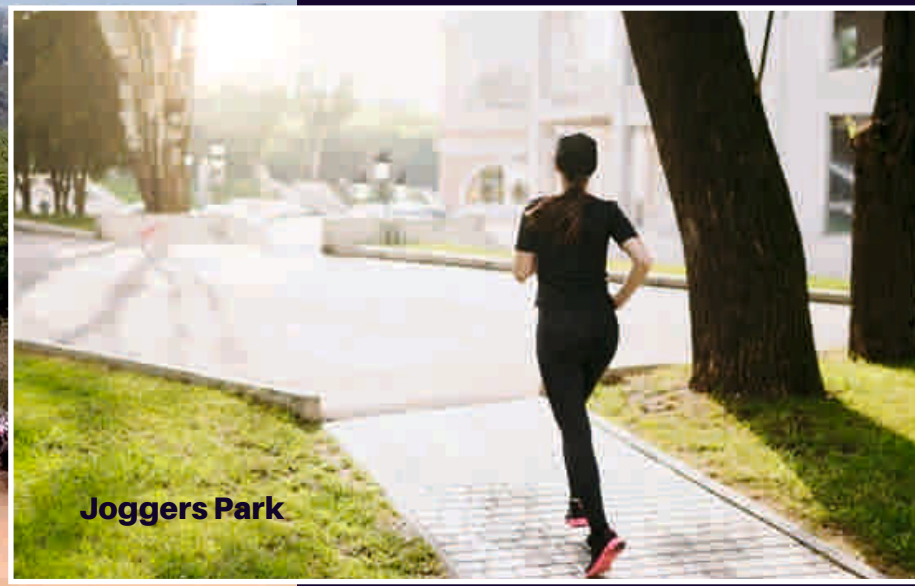


HAYAT ASSETS

A well ventilated living spaces that provide stunning view of the well thought out refreshing landscape design, Just the way you have envisioned your home to be, assets have a balcony beyond your expectations. By walking to the balcony the swift & cold breeze of the sea will enlighten your heart with joy & cheerfulness.

enjoying the pleasure to witness the true beauty of Arabian sea also the eye pleasing ambient time to spend with your family.





## Amenities



Spacious Car Parking



Wireless Controlled Electric



Back Up Power Generator



Wireless Internet Connectivity



Security Surveillance System



High Speed Elevator



Earthquake Resistance Structure



Auto Door Lock System



Automatic Alexa System



Fall Ceiling With Led Lights



Fire Escape Exist System



Electronic Car Charging Connection



Children Lawn



Auto Call System



Borewell



24\*7 Security



24\*7 Water Supply



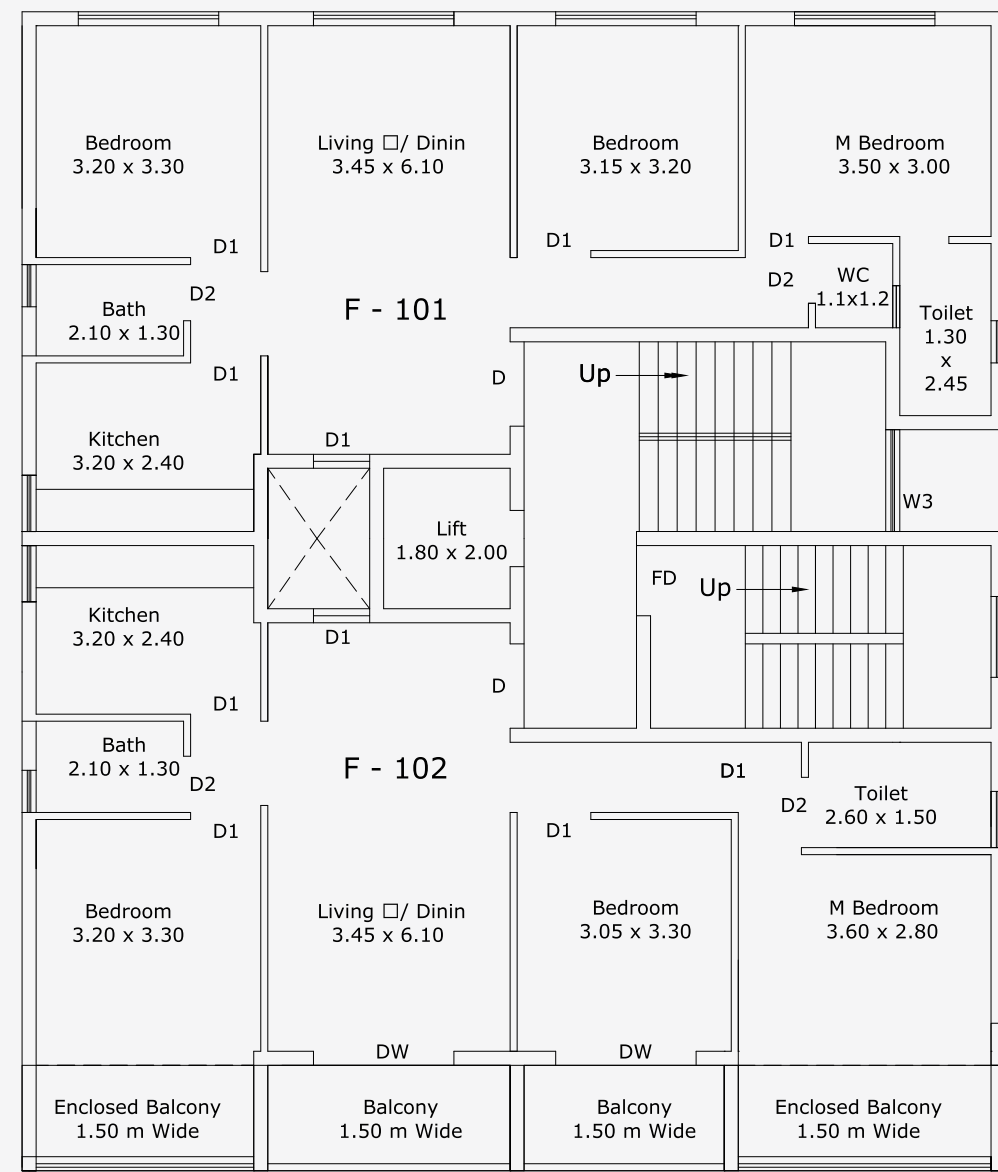
Seaview Gym



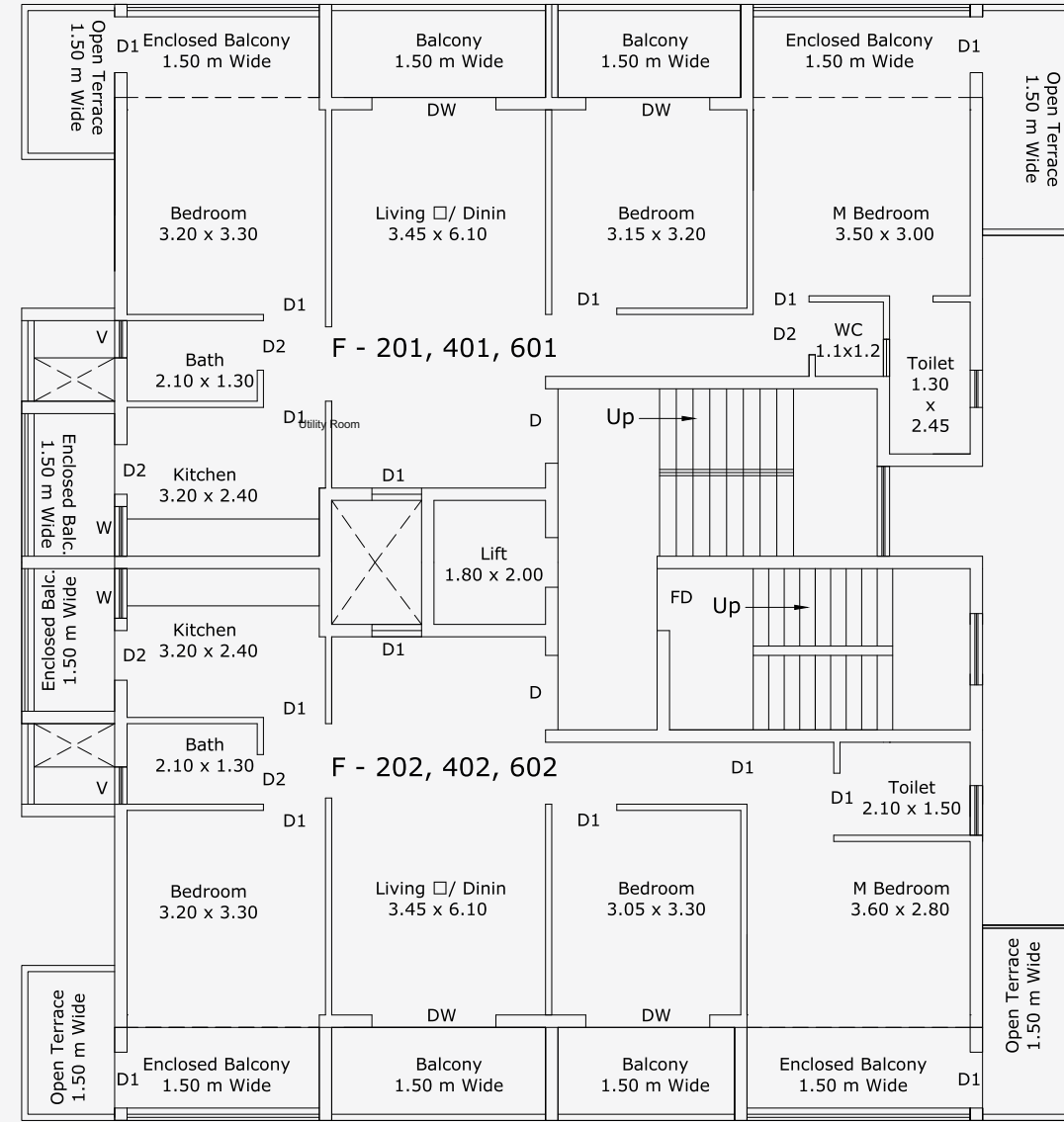
Infinity Pool With Terrace Area



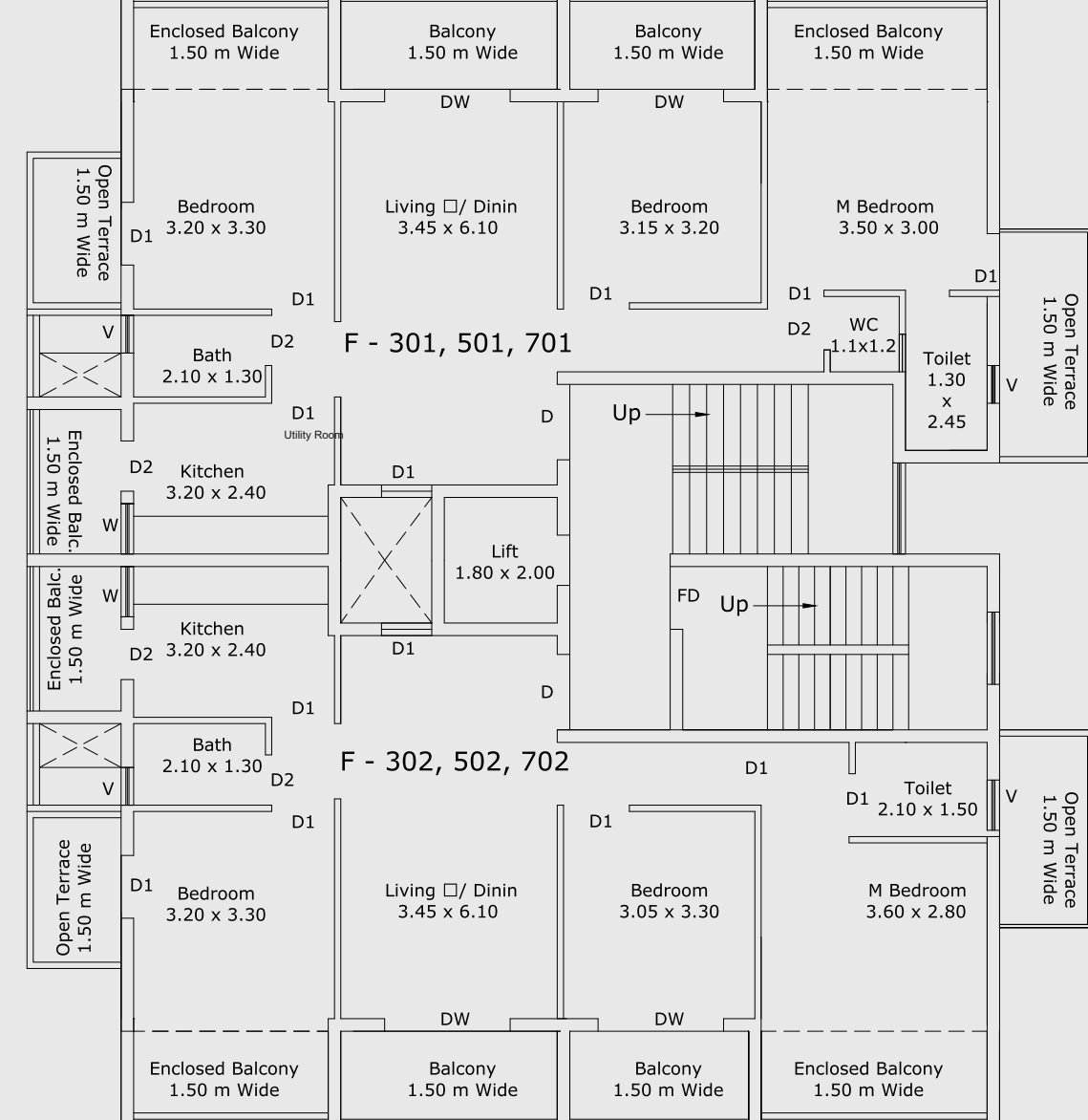
# 1<sup>st</sup> Floor Plan



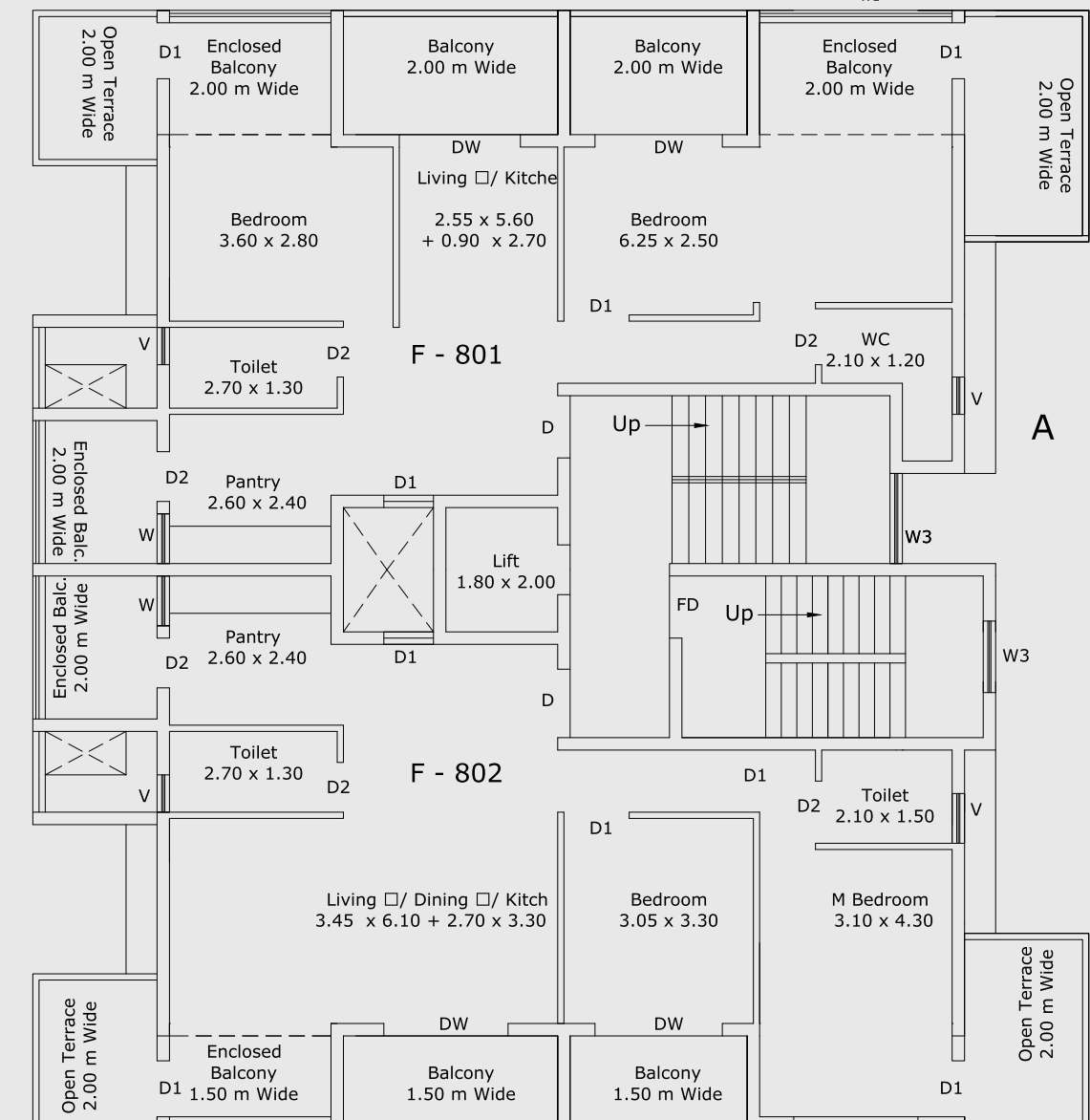
# 2<sup>nd</sup>/4<sup>th</sup>/6<sup>th</sup> Floor Plan



# 3<sup>rd</sup>/5<sup>th</sup>/7<sup>th</sup> Floor Plan



# 8<sup>th</sup> Floor Plan



## 1<sup>st</sup> Floor

Unit	Carpet Area	Built Up Area	Common Area	Balcony Area	Terrace Area	Super Built Up Area	CA1
F-101	75.665	84.295	37.775	0	0	102.52	18.23
F-102	76.065	103.855	37.775	17.53	0	126.31	22.46

## 2<sup>nd</sup> Floor

Unit	Carpet Area	Built Up Area	Common Area	Balcony Area	Terrace Area	Super Built Up Area	CA1
F-201	76.985	109.195	37.775	20.53	8.155	132.81	23.61
F-202	76.065	107.755	37.775	20.52	7.42	131.06	23.30

## 4<sup>th</sup> Floor

Unit	Carpet Area	Built Up Area	Common Area	Balcony Area	Terrace Area	Super Built Up Area	CA1
F-401	76.985	109.195	0	20.53	8.155	132.81	23.61
F-402	76.065	107.755	0	20.52	7.42	131.06	23.30

## 6<sup>th</sup> Floor

Unit	Carpet Area	Built Up Area	Common Area	Balcony Area	Terrace Area	Super Built Up Area	CA1
F-601	76.985	109.195	37.775	20.53	8.155	132.81	23.61
F-602	76.065	107.755	37.775	20.52	7.42	131.06	23.30

## 3<sup>rd</sup> Floor

Unit	Carpet Area	Built Up Area	Common Area	Balcony Area	Terrace Area	Super Built Up Area	CA1
F-301	76.985	109.195	0	20.53	8.155	132.81	23.61
F-302	76.065	107.755	0	20.52	7.42	131.06	23.30

## 5<sup>th</sup> Floor

Unit	Carpet Area	Built Up Area	Common Area	Balcony Area	Terrace Area	Super Built Up Area	CA1
F-501	76.985	109.195	37.775	20.53	8.155	132.81	139.32
F-502	76.065	107.755	37.775	20.52	7.42	131.06	139.32

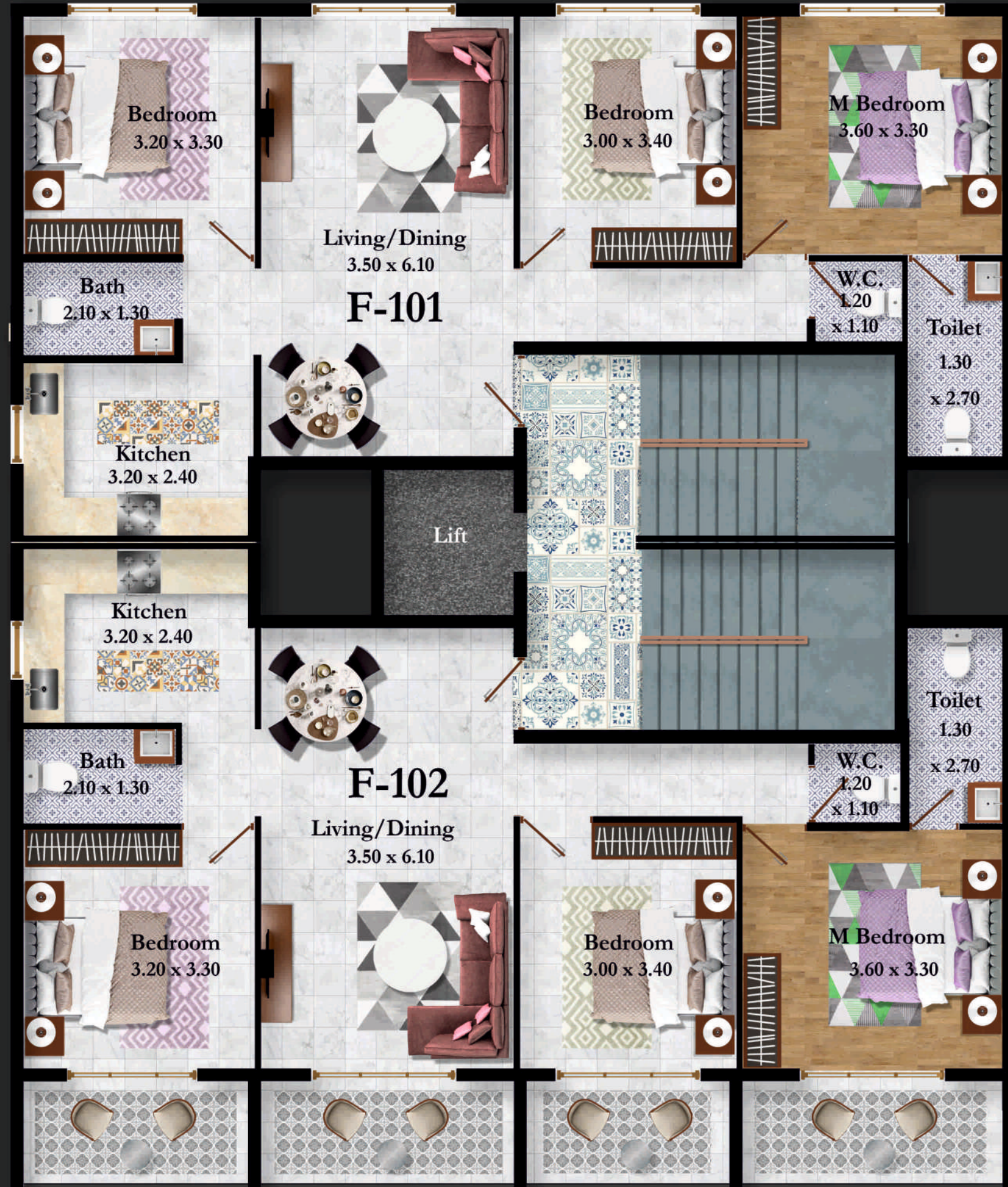
## 7<sup>th</sup> Floor

Unit	Carpet Area	Built Up Area	Common Area	Balcony Area	Terrace Area	Super Built Up Area	CA1
F-701	76.985	109.195	37.775	20.53	8.155	132.81	23.61
F-702	76.065	107.755	37.775	20.52	7.42	131.06	23.30

## 8<sup>th</sup> Floor

Unit	Carpet Area	Built Up Area	Common Area	Balcony Area	Terrace Area	Super Built Up Area	CA1
F-801	64.13	102.27	37.875	26.37	11.0675	124.38	22.11
F-802	74.095	101.405	37.875	16.34	9.975	123.33	21.93

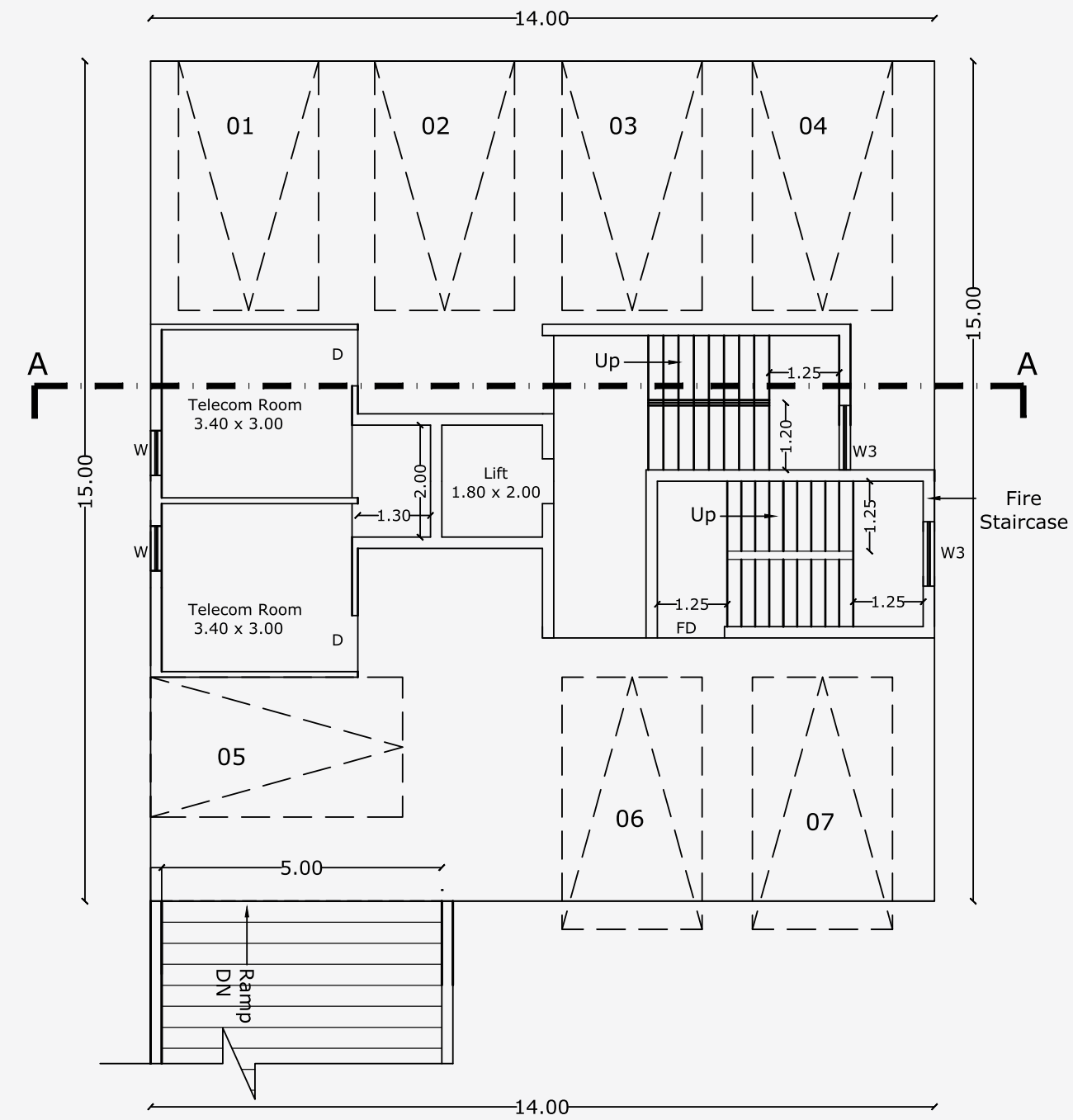
# 1<sup>st</sup> Floor Plan



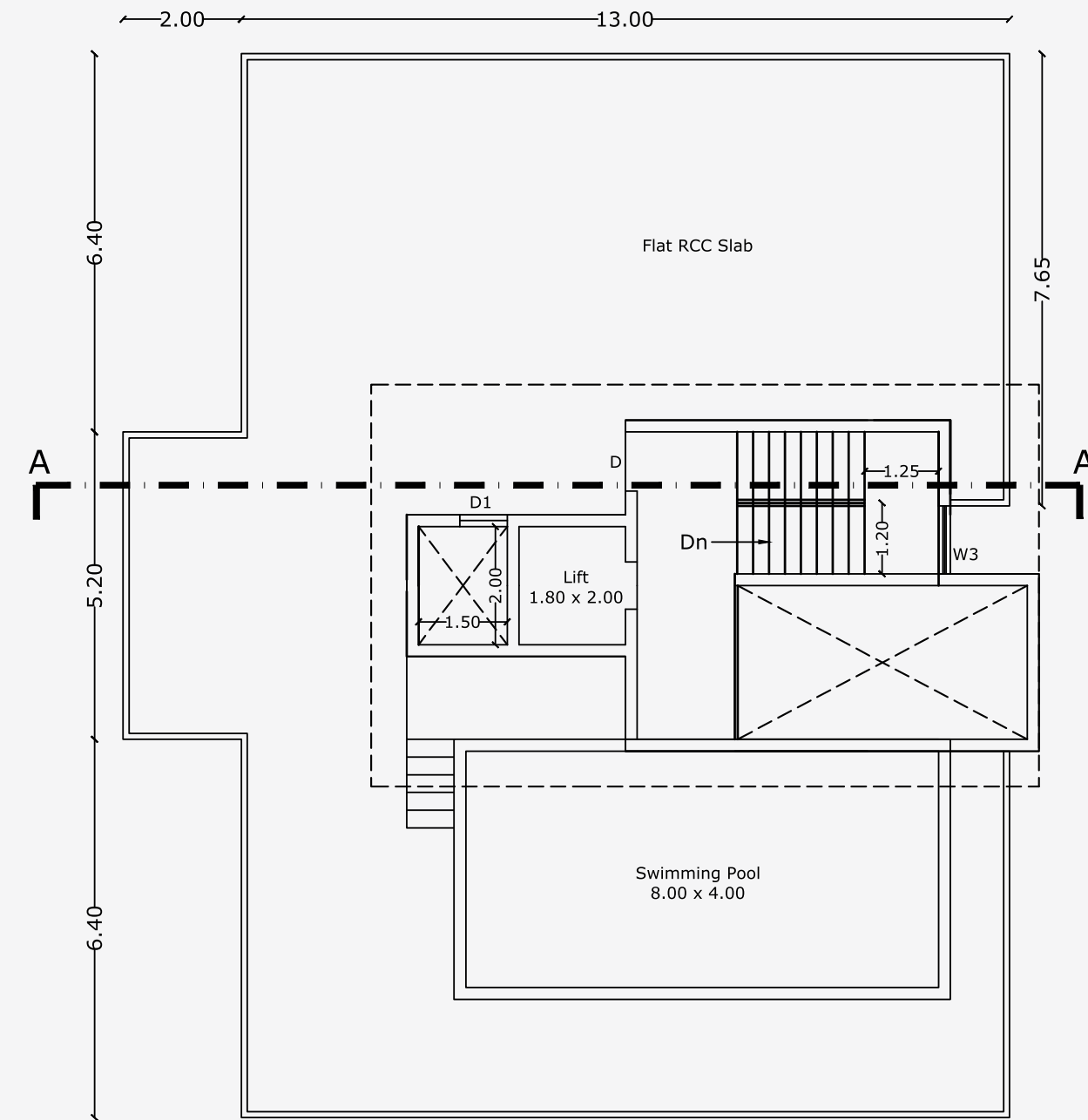
# 2<sup>nd</sup> Floor Plan



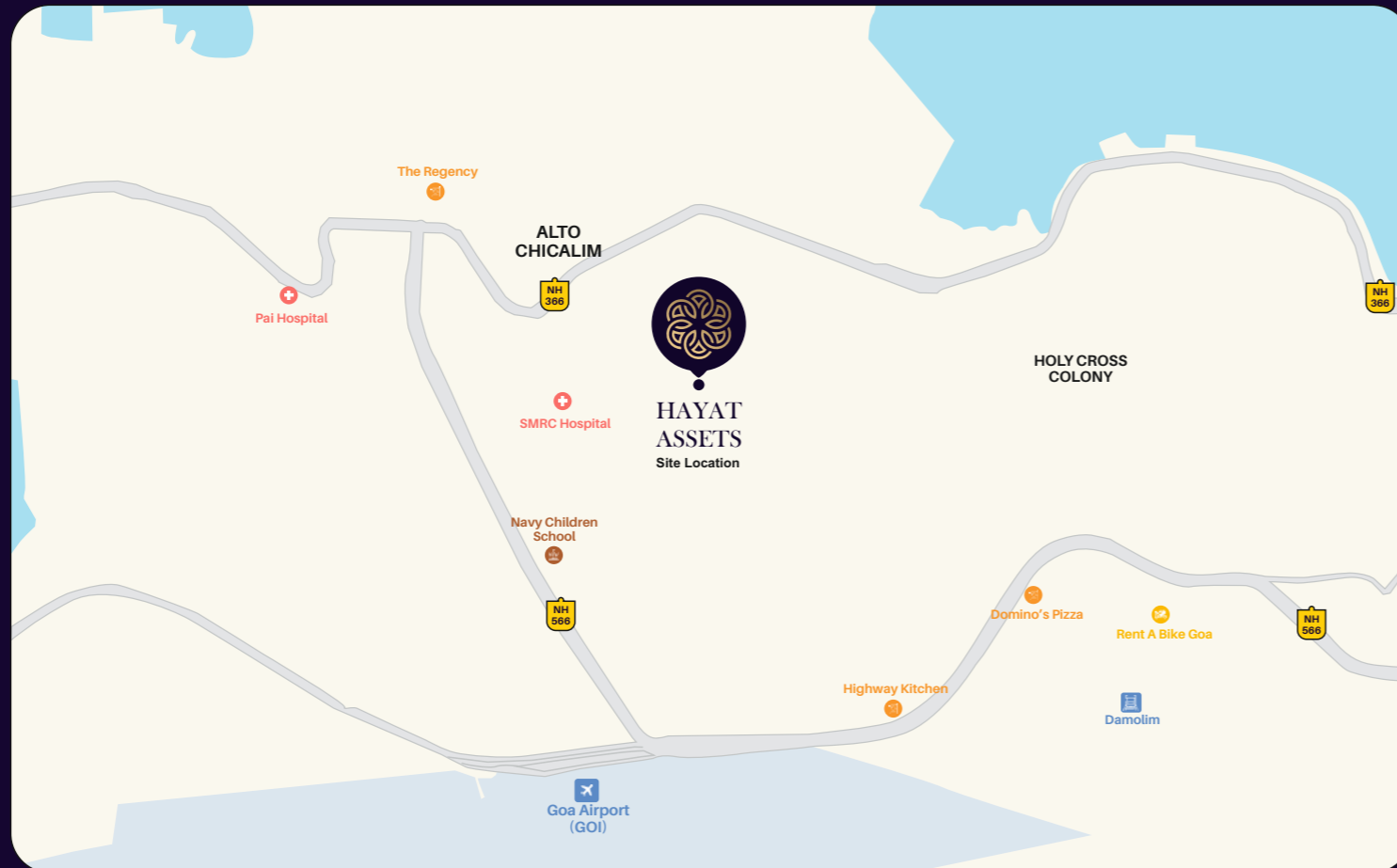
# Ground Floor Plan



# Roof Plan



## Location Map



HAYAT ASSETS

**Office Address:**  
Shop No. 20, Karma Point, Near  
Allahabad Bank, Vasco-Da-  
Gama.

**Site Address:**  
Plot number 9, Survey number 8/1,  
Chicalim, Behind SMRC Hospital,  
Landmark Joggers Park Vasco da  
Gama, Goa

**Contact:**  
**+91 7888109322**

**hayatinfrastructure@gmail.com**

**www.hayatinfrastructure.com**

Architect : Viraj Dessai | RCC Consultant : Olav Carvalo | Visuals by : Gaur Visual Arts

**DISCLAIMER:** The information contained in this brochure is subject to change as may be required and cannot form part of an offer or contract.  
3D Floor plans in Brochure are for reference purpose only.